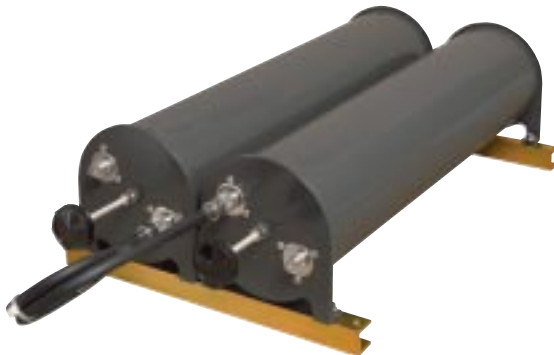


DB4001N Series

5" Bandpass Cavities, 148-174 MHz

dbSpectra

- Adjustable selectivity
- Frequency stability over a wide temperature range
- Positive contact, non-corrosive, rugged, flexible mounting
- Field tunable, shipped factory tuned with ability to retune in the field



DB4001N-2



DB4001N-3



DB4001N-1

ORDERING INFORMATION

	DB4001N-1	DB4001N-2	DB4001N-3
No. of Cavities:	1	2	3
Adjustable Selectivity (dB):	0.5 to 2	1.0 to 4	1.9 to 6.4
Dimensions – in (mm)			
Individual Cavity:	5 (127) x 21 (533.4)	5 (127) x 21 (533.4)	5 (127) x 21 (533.4)
Max. Outside:	7 (177) x 6 (152.4)	7 (177) x 13 (330.2)	7 (177) x 19 (482.6)
(with tuning rod extended):	x 27 (685.8)	x 27 (685.8)	x 27 (685.8)
Net Weight – lbs (kg):	5 (2.27)	13 (5.9)	20 (9.07)
Shipping Weight – lbs (kg):	8.5 (3.86)	18 (8.16)	25 (11.34)

ELECTRICAL

Frequency Range (MHz):	148-174
Insertion Loss (desired frequency) (dB):	See Adjustable Selectivity in Ordering Information
Attenuation (undesired frequency) (dB):	See Curves
Impedance (Ohms):	50
VSWR* (at Resonance):	1.5:1 (max.)
Max. Power Input (continuous duty) (Watts) with Insertion Loss per Cavity:	
@ 0.5 dB Loss	275
@ 1.0 dB Loss	150
@ 2.0 dB Loss	100

*VSWR maximum with 2 dB loop setting will be 2.0:1.

MECHANICAL

Temperature Range:	-30° to +60° C
(for negligible frequency shift)	
Connectors:	N-Female
Outer Conductor:	Aluminum
Inner Conductor:	Silver Plated Copper
Tuning Rod:	Invar
Coupling Loops:	Copper
Finish:	Black
Mounting:	Any position
Dimensions – in (mm):	See Ordering Information
Weight – lbs (kg):	See Ordering Information

dbSpectra

1620 E. Highway 121, Building B • Lewisville, Texas 75056
Ph: 972.389.0595 • Fax: 972.389.0594 • www.dbspectra.com

DB4001N Series

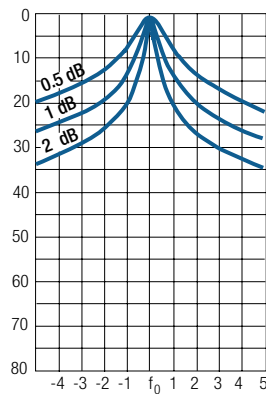
5" Bandpass Cavities, 148-174 MHz

dbSpectra

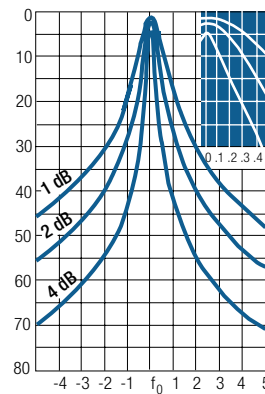
- Adjustable selectivity
- Frequency stability over a wide temperature range
- Positive contact, non-corrosive, rugged, flexible mounting
- Field tunable, shipped factory tuned with ability to retune in the field

TYPICAL SELECTIVITY CHARACTERISTICS OF DB4001N Attenuation (dB) vs. Frequency (MHz)

DB4001N-1
Single Cavity



DB4001N-2
Dual Cavity



DB4001N-3
Triple Cavity

